



# *Pioneers in World Class MATS & FLOORING*

*Industry | Agricultural | Speciality  
Food Service | Entrance | Sports & Leisure*



**RICHARD PIERIS EXPORTS PLC**



[rpesales@arpico.com](mailto:rpesales@arpico.com)



[www.arpicorubber.com](http://www.arpicorubber.com)



+94 11 4834150

## About RPE

*Richard Pieris Exports PLC (RPE) pioneered the manufacture and export of Rubber mats for numerous applications with highest quality standards also RPE manufacture a range of rubber products including food grade jar sealing rings, crutch tips, rubber shoe soles and specialized rubber products for the US, European and the Asia Pacific markets from its inception since 1983. Richard Pieris Exports is a subsidiary of Richard Pieris & Company Limited (ARPICO), one of the largest and most diversified blue chip corporate entities in Sri Lanka.*

*Richard Pieris Exports rubber mats range mainly divided in six product categories. Entrance mats, Food Services Mats, Agricultural Mats, Sports & Leisure Mats, Industry Mats and Specialty mats. Specialty mats includes Fire retardant mats, Electrical Safety mats, Anti-static mats & Anti-Microbial mats for all of which conforms to the international standards. Test certificates have been obtained from laboratories in UK & Germany. At present, RPE export 300 types of rubber mats of various colors, hardness, thickness, sizes, uses and applications.*

*RPE is a ISO 9001 2015 certified company and have obtained number of certification and awards during its journey over three decades.*



**Group web**  
[www.arpico.com](http://www.arpico.com)

# Product Catogory

<i>Industry Mats</i>	<i>07 - 22</i>
<i>Agricultural Mats</i>	<i>23 - 29</i>
<i>Speciality Mats</i>	<i>30- 32</i>
<i>Food Service Mats</i>	<i>33 - 44</i>
<i>Entrance Mats</i>	<i>45 - 48</i>
<i>Sports &amp; Leisure Mats</i>	<i>49 - 53</i>



# Application Icons



**CHILDREN INDOOR PLAY AREAS**



**GYMNAZIUMS**



**ICE SKATING RINKS**



**OFFICES**



**WAREHOUSES**



**DISTRIBUTION CENTERS**



**CATTLE SHEDS**



**HORSE SHEDS**



**CATTLES & HORSE TRANSPORTING VEHICLES**



**WORKSTATIONS**



**PATH WAYS**



**FACTORY FLOORS**



**HEAVY DUTY APPLICATIONS**



**KITCHENS**



**LABORATORIES**



**ANY OIL SPILLAGE AREAS**



**ASSEMBLY LINES**



**ELECTRICAL EQUIPMENT**



**TRANSFORMERS FROM HIGH VOLTAGE**



**INTERNAL & EXTERNAL USES**

# Feature Icons



**GENERAL PURPOSE**



**OIL/GREASE RESISTANT**



**OIL/GREASE PROOF**



**FRY -PROOF**



**ELECTRICAL RESISTANT**



**SKATE RESISTANT**



**ANTI-SLIP**



**ANTI-FATIGUE**



**DIRT TRAP**



**OPEN BOTTOM**



**MIDDLE MAT WITHOUT BUILT-IN RAMPS**



**END MAT WITHOUT BUILT-IN RAMPS**



**SINGLE MAT WITH BUILT-IN RAMPS**



**MIDDLE MAT WITH BUILT-IN RAMPS**



**END MAT WITH BUILT-IN RAMPS**



**CORNER MAT WITH RAMPS**



**CONNECTORS**



**OPTIONAL SIDE RAMPS**



**OPTIONAL YELLOW RAMPS**



**YELLOW CORNER PIECE FOR RAMP**



**GROVED SURFACE**



**SPIKE SURFACE**

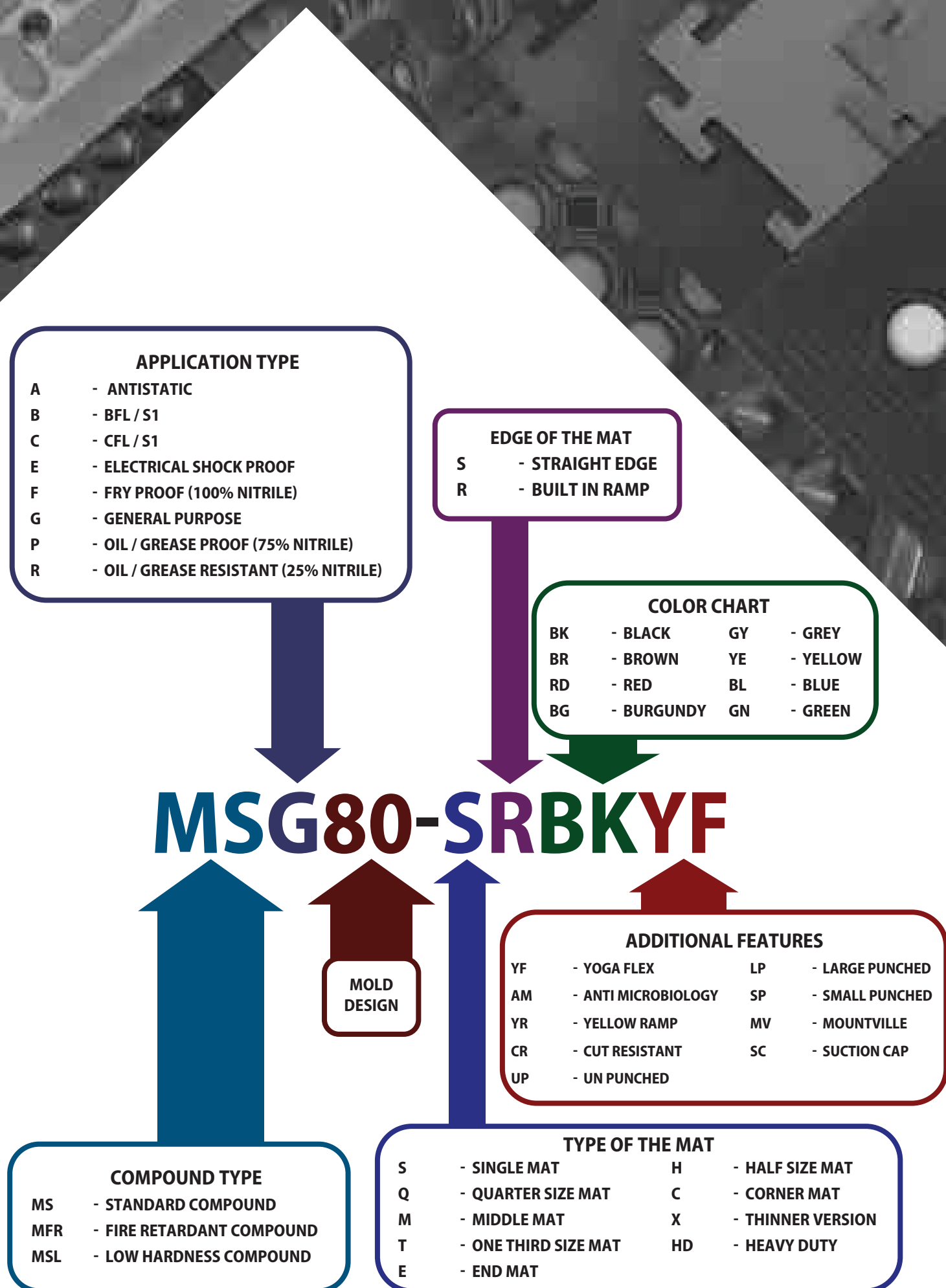


**SINGLE MAT WITHOUT BUILT-IN RAMPS**



**SOLID TOP SURFACE**

# Code Description



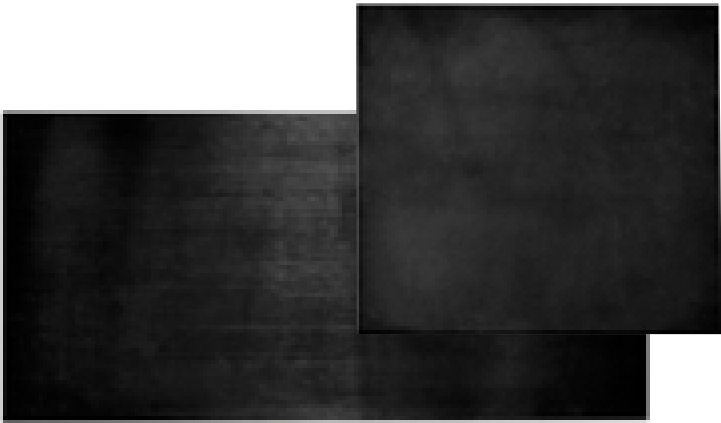


# SPECIALITY MATS

Our speciality mat range provides a wide selection of safety mats for the industry. Whether it is to prevent accidents due to tripping and slipping or reduce fatigue due to long hours of standing, all these factors lead to productivity improvements and improved worker morale.



# Electrical Safety



Applications



Available Colours

Black

Features



Product Name	Dimension	Pcs per Pallet	Pcs per 20 FCL
	Centimeters		
MSE47-SSBK	100 x 100	175	2500
MSE119-SSBK	200 x 100	50	800

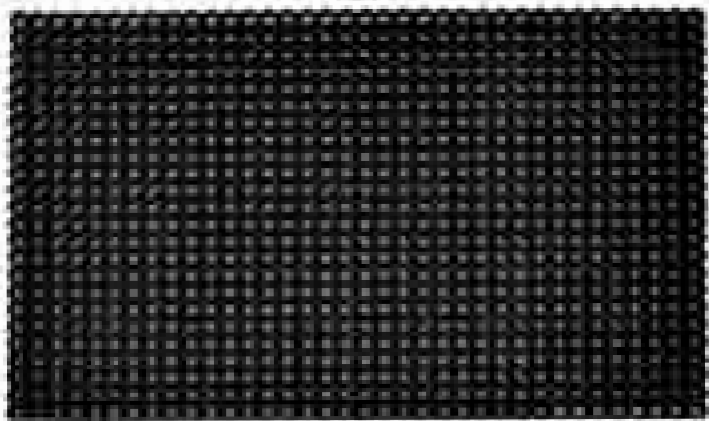
**Product Features :**

- Provides safety against electrical shocks up to 26.5Kv
- For use in front of switchboards
- Slip-resistant fine grooved surface for safety
- Conforms to BS 921:1976 standards





# Fire Retardant Mats



Applications



Available Colours

Black

Terra cotta

Features

GP



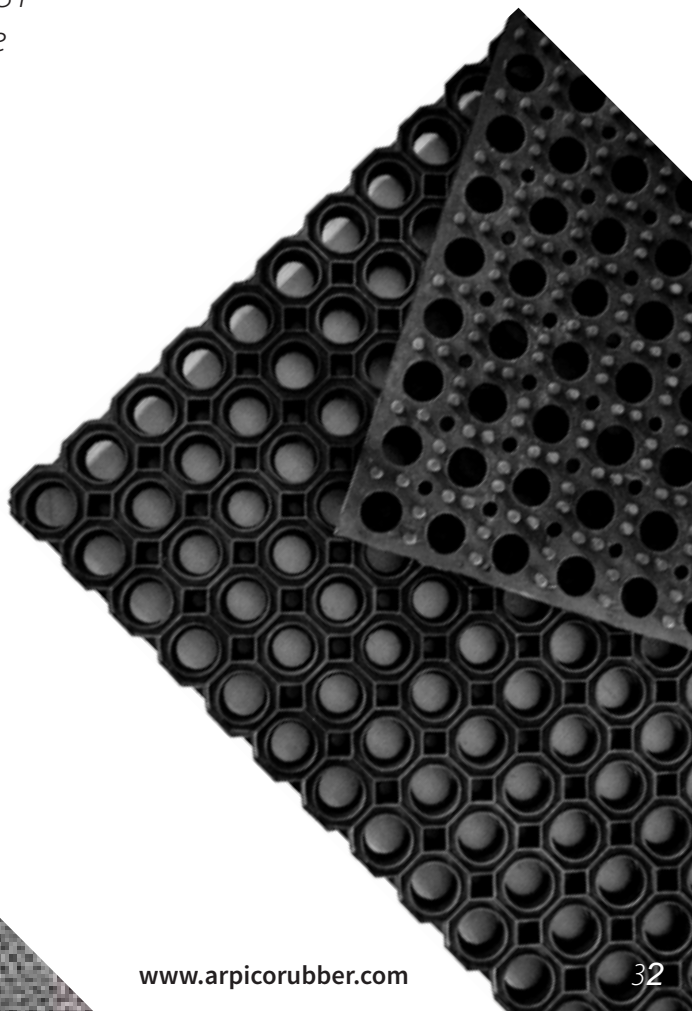
Product Name	Dimension		Pcs per Pallet	Pcs per 20 FCL
	Feet	Centimeters		
MFRB69-SSBK	5' x 3'	150 x 100	95	750

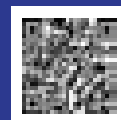
## Product Features :

- Octomat design gives superior slip resistance
- Tested according to EN ISO 11925-2 and EN ISO 9279-1 standards
- Conforms to European classifications Bfl-S1 & Cfl-S1
- The raised studs underneath allows easy drainage



SPECIALITY MATS





**Richard Pieris Exports PLC**

10, Raja Mawatha, Ekala, Ja-ela, Sri Lanka

[www.arpicorubber.com](http://www.arpicorubber.com)